



European & American style containers



PRODUCT CATALOGUE

PACKAGING

ROUND METAL PAINT CANS

INDUSTRIAL METAL CONTAINERS



Paint Cans

- Finest quality tin-coated steel
 - Choice of unlined or epoxy lined for sensitive products
- Paint Cans are the choice for paints, varnish, and lacquers.

Leak-tight double seam construction.

Gray Or Gold epoxy lining is available for latex paint or other water-base products.

- Paint Cans have no handle or ears, unless otherwise specified...
- All cans supplied with **TT (Tripletite)** friction top lids.



**Available in lined versions. Special order quantities only.
All cans and plugs are available separately Contact Your Local Sales Representative.*

GMC Part#	Size:	Pallet Qty.	Description
ZP008	Half Pint (8oz)	10,080	Round Paint Can with TT (Tripletite) Lid Unlined (Plain)
ZP016	Pint (16oz)	5,040	Round Paint Can with TT (Tripletite) Lid Unlined (Plain)
ZP032	Quart (32oz)	1,296	Round Paint Can with TT (Tripletite) Lid Unlined (Plain)
ZP128	1Gallon (128oz)	336	Round Paint Can with TT (Tripletite) Lid Unlined (Plain)
ZP033	1LITER 1000ml	1296	Round Paint Can with TT (Tripletite) Lid Unlined (Plain)

GMC Part#	Size:	SLEEVE Qty.	Description	Plugs for Paint Cans
ZPP008	Half Pint (8oz)	50	PLUG for Round Paint Can with TT (Tripletite) Lid Unlined (Plain)	
ZPP016	Pint (16oz)	50	PLUG for Round Paint Can with TT (Tripletite) Lid Unlined (Plain)	
ZPP032	Quart (32oz)	50	PLUG for Round Paint Can with TT (Tripletite) Lid Unlined (Plain)	
ZPP128	1Gallon (128oz)	50	PLUG for Round Paint Can with TT (Tripletite) Lid Unlined (Plain)	



(Gold Color Epoxy lined for sensitive products) Round Paint Cans with TT (Tripletite) Lid provide a non-reactive barrier between the container and the product/atmosphere, protecting the contents and preventing rust. These cans are ideal for oil and water-based paints, glue, adhesives.

GMC Part#	Size:	Pallet Qty.	Description
ZG008	Half Pint (8oz)	10,080	Round Paint Can with TT (Tripletite) Lid (Gold Color Epoxy lined for sensitive products)
ZG016	Pint (16oz)	5,040	Round Paint Can with TT (Tripletite) Lid (Gold Color Epoxy lined for sensitive products)
ZG032	Quart (32oz)	1,296	Round Paint Can with TT (Tripletite) Lid (Gold Color Epoxy lined for sensitive products)
ZG128	1Gallon (128oz)	336	Round Paint Can with TT (Tripletite) Lid (Gold Color Epoxy lined for sensitive products)
ZG033	1LITER 1000ml	1296	Round Paint Can with TT (Tripletite) Lid (Gold Color Epoxy lined for sensitive products)

GMC Part#	Size:	SLEEVE Qty.	Description	Plugs for Paint Cans
ZGP008	Half Pint (8oz)	50	PLUG for Round Paint Can with TT (Tripletite) Lid (Gold Color Epoxy lined for sensitive products)	
ZGP016	Pint (16oz)	50	PLUG for Round Paint Can with TT (Tripletite) Lid (Gold Color Epoxy lined for sensitive products)	
ZGP032	Quart (32oz)	50	PLUG for Round Paint Can with TT (Tripletite) Lid (Gold Color Epoxy lined for sensitive products)	
ZGP128	1Gallon (128oz)	34	PLUG for Round Paint Can with TT (Tripletite) Lid (Gold Color Epoxy lined for sensitive products)	



EUROPEAN STYLE PACKAGING

INDUSTRIAL METAL CONTAINERS

F-Style INDUSTRIAL cans

F-Style cans are widely used in the automotive, paint and specialty product marketplace. They are available in a variety of sizes and configurations.

Specifications: • Flange: 42mm & 32mm REL fittings



GMC Part#	Size:	Pallet Qty.	Description
FF165	5 liters	240	Oblong Rectangular, (118 X 147 X 313 mm) Metal Handle, Plastic Spout, (ø 56,90)
FF082	2.5 liter	480	Oblong Rectangular, (118 X 147 X 170 mm) Metal Handle, Plastic Spout, (ø 56,90)
FF128	1 gallon (128 oz)	320 & 400	Oblong Rectangular, (118 X 147 X 245 mm) Metal Handle, Plastic Spout, (ø 42,30)
FF032	Quart (32oz)	1,296 & 780	Oblong Rectangular, (115 X 59 X 182 mm) Metal Handle, Plastic Spout, (ø 42,30)



INDUSTRIAL Closures for metal packaging

GM Containers's closures have been specially designed for tinplate containers in a broad range of sizes (from 250ml up to 5l).

Features

- Tamper-evident tear-out diaphragm
- Child-resistance, certified according to ISO 8317
- Directional Flex spout Anti-glug lamellas for ease of pouring
- Optional cross-linking for improved chemical resistance
- Optional fluorination for improved barrier properties



Our closures are manufactured in high-quality polyethylene and are available in standard colours of red, white and black.

EUROPEAN STYLE PACKAGING

INDUSTRIAL METAL CONTAINERS

Cone and pour top INDUSTRIAL cans

Pour Top cans are widely used in the automotive, paint and specialty product marketplace. They are available in a variety of sizes and configurations.

Specifications: • Flange: 42mm & 32mm REL fittings



GMC Part#	Size:	Pallet Qty.	Description
FC008	1/16 Half Pint (8oz)	3,720	European Style Cone-Top Cans, Plain, Plastic Spout, (ø 23,80)
FC016	1/8 Pint (16oz)	2,040	European Style Cone-Top Cans, Plain, Plastic Spout, (ø 23,80)
FC032	¼ Quart (32oz)	1,344	European Style Cone-Top Cans, Plain Plastic Spout, (ø 42,30)



GMC Part#	Size:	Pallet Qty.	Description
FCL008	ø 23,80	2000	Plastic Spout, (ø 23,80)
FFL032	ø 42,30	2000	Plastic Spout, (ø 42,30)
FFL042ALU	ø 42,30	1100	Plastic Spout, (ø 42,30)
FFL082	ø 56,90	2000	Plastic Spout, (ø 56,90)



PACKAGING

INDUSTRIAL METAL CONTAINERS

5 Gallon Black Open Head Steel Pail with and Lug Cover, UN Rated
 Epoxy Phenolic Lining Available with Special PO

GMC Part#	Size:	Pallet Qty.	Description
ZP640	5 Gallons	168	5 Gallon Black Open Head Steel Pail with Lug Cover, UN Rated



5 GALLON Black Tight Head Steel Pail with Rust Inhibitor Enamel and Rieke Opening, UN Rated

GMC Part#	Size:	Pallet Qty.	Description
ZP640	5 Gallons	84	Black Tight Head Steel Pail with Rust Inhibitor Enamel and Rieke Opening, UN Rated



*Rieke Openings Are Designed For Rieke® FLEXSPOUTS®

KEY Chemicals

COATING Raw Materials **UNIVERSAL**
MADE IN JAPAN Adhesion Promoters

CB +plus™

**ADHESION
PROMOTER**
PROMOTOR DE ADHESIÓN



GMC Part#	Size:	Pallet Qty.	Description
HB6681D	200L	4 Drm.	180kg Net, 204kg Gross)



- Self etching Primer
- Primer Sealer
- Flexible Primer
- DTM "Direct to Metal"
- Primer Surfacer

S +plus™
RTS
Ready to Spray

Adhesion Promoter On A Primer Base

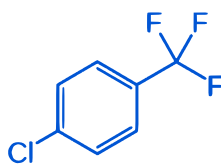


GMC Part#	Size:	Pallet Qty.	Description
HB6967	200L	4 Drm.	(150kg Net, 174kg Gross)

PCBTF VOC EXEMPT SOLVENT

P-Chlorobenzotrifluoride (PCBTF)

CAS NO. 98-56-6



GMC Part#	Size:	Pallet Qty.	Description
BHG6940	200L	4 Drm.	PCBTF (Zero VOC) Para-Chlorotrifluoromethylbenzene (Drum 250kg Net, 270kg Gross)

VOC Exempt Solvent: Parachlorobenzotrifluoride is VOC exempt in all 50 States and Canada. It is a stable, non reactive, non corrosive, hydrophobic, low polarity solvent. It will not undergo hydrolysis or dehydrochlorination and does not support combustion.

Adhesives: Parachlorobenzotrifluoride is used as a VOC exempt solvent in adhesives.

Cleaners and degreasers: Cleaners and degreasers can use Parachlorobenzotrifluoride to reduce VOC content.

Paints and Coatings: PCBTF is used as VOC exempt solvent in many paints and coatings. It has a good solubility profile with a mid-range evaporation rate. Parachlorobenzotrifluoride can be used in both Parts A and B of urethanes and epoxies.

Reaction: Solvent Parachlorobenzotrifluoride is used as a VOC exempt reaction solvent.

Chemical Intermediate: Pharmaceuticals and agricultural chemicals are manufactured using PCBTF.



GMTM Containers Inc
Industrial Containers & Key Chemicals



AMERICAN STYLE!

Scan QR-CODE www.gmcontainers.net

Containers Packaged For Paint Stores

ROUND METAL PAINT CANS AND PLUGS, PACKAGED FOR PAINT STORES (GOLD EPOXY LINED)

GM08G 1/2 Pint Metal Paint Can with Lid, GOLD EPOXY LINED (Case Pack: 120 ea.) **45 Cases/Pallet**
120 UNITS/Case, Wt.: 26.5 Lbs (12.2 kg), Dim.: 21.5"x20."x13.5"

GM16G 1 Pint Metal Paint Can with Lid, GOLD EPOXY LINED (Case Pack: 50 ea.) **72 Cases/Pallet**
50 UNITS/Case, Wt.: 11 Lbs (5 kg), Dim.: 17"x12.75"x12.5"

GM32G 1 Quart Metal Paint Can with Lid, GOLD EPOXY LINED (Case Pack: 56 ea.) **36 Cases/Pallet**
56 UNITS/Case, Wt.: 17.5 Lbs (7.8 kg), Dim.: 21.5"x20."x13.5"

GM128G 1 Gallon Metal Paint Can with Lid, GOLD EPOXY LINED (Case Pack: 50 ea.) **16 Cases/Pallet**
34 UNITS/Case, Wt.: 26.5 Lbs (12 kg), Dim.: 26.5"x24."x20"



ROUND METAL PAINT CANS AND PLUGS , PACKAGED FOR PAINT STORES UNLINED (PLAIN)

GM08U 1/2 Pint Metal Paint Can with Lid, UNLINED (PLAIN) (Case Pack: 120 ea.) **45 Cases/Pallet**
120 UNITS/Case, Wt.: 26.5 Lbs (12.2 kg), Gold Phenolic Lined Dim.: 21.5"x20."x13.5"

GM16U 1 Pint Metal Paint Can with Lid, UNLINED (PLAIN) (Case Pack: 50 ea.) **72 Cases/Pallet**
50 UNITS/Case, Wt.: 11 Lbs (5 kg), Gold Phenolic Lined Dim.: 17"x12.75"x12.5"

GM32U 1 Quart Metal Paint Can with Lid, UNLINED (PLAIN) (Case Pack: 56 ea.) **36 Cases/Pallet**
50 UNITS/Case, Wt.: 17.5 Lbs (7.8 kg), Gold Phenolic Lined Dim.: 21.5"x20."x13.5"

GM128U 1 Gallon Metal Paint Can with Lid, UNLINED (PLAIN) (Case Pack: 50 ea.) **16 Cases/Pallet**
34 UNITS/Case, Wt.: 26.5 Lbs (12 kg), Gold Phenolic Lined Dim.: 26.5"x24."x20"





CB +plusTM ADHESION PROMOTER
 PROMOTOR DE ADHESIÓN

HB6681D 200l Drm. (180kg Net, 204kg Gross)

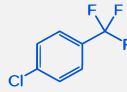


S +plusTM RTS
 Ready to Spray
 Adhesion Promoter On A Primer Base

HB6967 200l Drm. (150kg Net, 174kg Gross)



PCBTF VOC EXEMPT SOLVENT
 P-Chlorobenzotrifluoride (PCBTF)
 CAS NO. 98-56-6



BHG6940 200l Drm. (50kg Net, 270kg Gross)

